

# Pakman Awards 2019 - Business Recycling Champion

## Background

Raidió Teilifís Éireann is Ireland's Public Service Media Organisation. RTÉ, through all of its services, forms a major part of the infrastructure of Irish society. The distinctive leader in Irish media, RTÉ provides a comprehensive and cost-effective broadcasting service to the Irish public on radio, television and the internet.

RTÉ has fully recognised its responsibility in the context of environmental performance and sustainability. This commitment is enshrined in its Environmental Policy which is signed at Director General level of the company. This policy embraces adjustments in our environmental approach in keeping with changing times including the need to focus on the impacts of climate change.

With an awareness of an ever increasing population, who are living longer and the high demand on the world's natural resources; RTÉ is aligning its environmental performance with its sustainability as a company. This ethos is manifested in the specific areas of environmental performance/achievements.

RTÉ holds the Business in the Community – Business Acting Responsibly Mark. This testifies the commitment and performance of the company to responsible business behaviour.

This CSR certification is independently audited by the National Standards Authority of Ireland (NSAI) and it is based on ISO 26000. This is an all-encompassing standard that certifies responsible and sustainable business practices and is available to organisations worldwide.



## Environmental Management

The Green Broadcaster Advisory Group in RTÉ, comprises representatives from all parts of the organisation who can influence environmental performance. Attendees include external representation eg the EPA. We believe it is important at the point of target setting that we avail of specialist expertise to broaden the focus of the challenges we must address. We also believe that inclusion of a diverse group of staff in the process of setting targets to be of paramount importance to success.



This group has recently been relaunched – raising the scope and profile of its functionality to address the challenges we face over the coming years in context of sustainability.

The report of this process is circulated in a report to the Director General and the Executive Board of the company and is made available to staff.

Awareness and communication – are factored into our environmental management as an essential component to our overall performance. We have an environmental website and include high profile stories on the Hub – RTÉ's electronic notice board.

RTÉ as a broadcaster is also currently working on a programme content which raises awareness on sustainability and climate change.

## Waste Prevention and Management

We operate a binless office system with segregation at source having taken 312,000 plastic bin liners from the waste operation every year. With the use of a reusable postal type bag for recyclables and compost bags for general waste we also manage our waste without the use of single use plastic bags. Gone are the days when 90,000 plastic bin liners a year simply conveyed rubbish to the landfill. Plastic bags used to transport waste could be argued as a very significant single use of plastic.

In June 2018 and in the wake of serious international concern with regard to the impact of waste plastic on the planet, RTÉ took the dramatic step at the time in partnership with its catering contractor of eliminating all single use plastics from restaurant operations.

Following the successful launch of a branded water bottle we commissioned a beautifully branded "I Care.. about the environment and the homeless" – keep cup. The cup is BPA and Phthalate free and sells for €6.50 in our restaurants. The profits go to Focus Ireland. An incentivised price structure was introduced eg no change in price for customers using crockery cup, an increased charge using a compostable cup and a reduction in price with a reusable cup.

Hundreds of the RTÉ branded keep cups have been sold and the discount extended to people using their own keep cup. The branding of each cup as it sits on the desks of RTÉ staff serves to promote the important principles associated with it. Our method of achieving this was used as a case study on the government website and all public bodies are obliged to eliminate single use plastic beverage containers, cutlery and straws from their operations after 31 March 2019. Our water cooler contractor supported our lead on this issue and provided compostable cups at water coolers on site.



Specially installed sink and directions for staff to sanitise their keep cups



Ballygowan recognises RTÉ's sustainability programme and its **removal of single use plastics from restaurant operations earlier this year.**

In support of this a compostable cup has been commissioned by Ballygowan to replace the plastic one currently at water cooler stations in RTÉ. **This changeover will take place tomorrow Friday 9 November.**

Details of the achievements were reported to staff:

**Elimination of single-use plastics on track** Published: August 22, 2018

We are delighted to share some of the results of RTÉ's programme to eliminate single-use plastics which we launched in June.

Thanks to your support:

We have reduced our monthly usage of single-use cups from 33,500 to 24,000. This equates to a reduction of 114,000 over a 12 month period. Because all cups are now compostable, our policy will remove approximately 402,000 plastic single-use cups from the waste stream per year.

We have also taken 8,250 plastic salad/food containers out of the waste stream and replaced these with compostable containers. This equates to approximately 99,000 plastic containers being removed from the waste stream over a 12 month period.

These figures serve as an example of the significant impact of RTE's policy in this area. Similar figures apply to all the other single-use plastic items from the restaurant which have now been replaced with compostable alternatives.

Your support is very much appreciated and has made the success reported possible.

Thank you.

Eileen Duggan,



With a purpose designed waste compound supporting segregation at source the RTÉ compound houses facilities for as many waste streams as possible in order to optimise waste prevention. This includes Oxfam facilities for books/cds and clothes.

After significant planning we reversed the use of our on site compactor and now all our recyclables go into this site compactor and the general waste is taken in bins. We call this our **UPSIDE DOWN** project. The purpose of this project was to remove the "black hole" concept whereby waste goes in to the compactor and disappears. We have found this to be succesful in identifying our waste product so that targets can be set for further waste prevention. Initial figure from this process gave us 84% recycling.

RTÉ's bin-less office programme with segregation at source has seen **RTÉ achieve recycling rates up to and over 80%. Most recently items which are not recycled are in fact recovered thereby giving us a zero to landfill status.**

However in recent years and in cognito with changes in our environmental policy and legislation – the focus has strongly moved to waste prevention.

A different approach has been adopted which focuses on products before they become waste. This involves partnerships with our contractors and other stakeholders to explore and identify what can be done which will prevent or slow down the generation of waste. A recent example of this is collaboration with our water cooler contractor with regard to provision of compostable cups at water coolers on site.

RTÉ has developed a number of "Closed-Loop Projects" over the years involving other suppliers and other third parties, leading to a common environmental/community benefit. The following includes some of these and other developments geared to high standards of environmental performance.

- Closed-Loop Project between Baxter Storey site Caterer and Lynk Taxis to provides Sandwiches to the Night Shelter – this was developed through targets set in our Environmental Plan to reduce food waste. **On going.**
- Our toner cartridge recycling provides funding to Crumlin's Children Hospital. This is **On going** through our service provider.
- RTÉ supports a major battery recycling initiative with WEE Ireland whereby RTÉ and staff collect batteries for recycling – donations from this then go to Laura Lynn Children's Hospice. **On going.**
- The content of bins in the toilet areas is primarily blue paper towel and this waste is kept separate and our waste contractor then directs this for composting. This measure addresses approximately six tonnes of waste a year.
- Resulting from commitments in our environmental policy and plan, during 2018 we have pursued ways of addressing environmental performance in programme making and standards to influence programmes commissioned. The process developed in the UK and used in other countries is "albert". There was strong support of the system and we are delighted to confirm that in cognito with other stakeholders we are bringing "albert" to Ireland and have purchased the calculator this year. We plan to introduce this in an internal pilot programme.
- The RTÉ Printing Department has taken measures to reduce waste paper by making an attractive notepad with the RTÉ colours from obsolete letter head paper. This is a further example of the spirit of sustainability being applied to ways of working throughout the organisation. Also, where possible eliminating plastics from print process.



# Energy

RTÉ is committed to the highest level of energy reduction and sustainability both in the management of existing infrastructure and the development of new infrastructure.

New focus has been placed on energy conservation within RTÉ by the National Energy Efficiency Action Plan 2009-2020, which stated:

**“The public sector will reduce its energy efficiency by 33% and be seen to lead by example showing all sectors what is possible through strong committed action”.**

RTÉ are managing in the direction of ISO50000 with one person on site now qualified to audit.

RTÉ is ahead of target for meeting its public sector commitment for 2020.

The Director General has recently signed up to the Carbon Pledge which involves a commitment to 50% reduction of carbon intensity by 2030.

RTÉ are leading by example with several technically innovative, industry-acclaimed projects, closely aligned to the core principles by which an effective sustainable energy policy should be based.

These include:

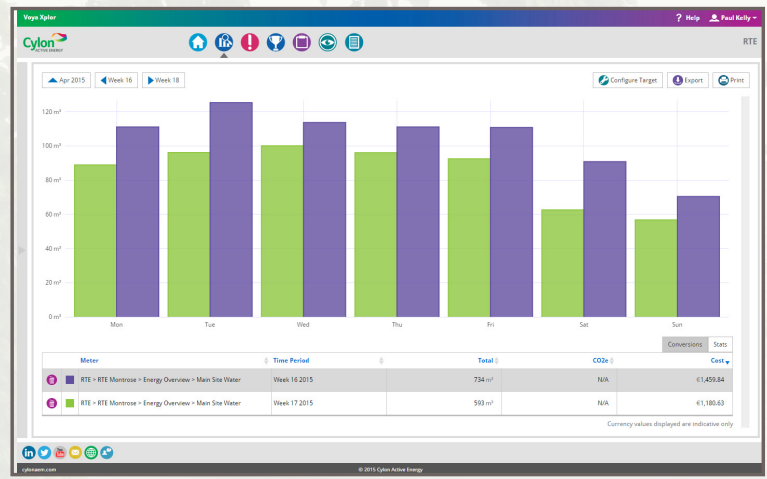
- Photovoltaic solar power generation on site <https://enlighten.enphaseenergy.com/pv/public/systems/8B7J664618/overview>

Since installation, the yield on the Solar PV project is confirmed as 59 MWh to date – the equivalent to what it would take to power 4 football stadiums for a day.

- **Retrofit** Energy Strategy for the TV Building’s Chilled water system. This made changes to how the cooling system for the Television Building was controlled. In simple terms it moved to a sophisticated demand driven system. Thereby eliminating unnecessary resource use.
- **Ice Bank Cooling System** at the Radio Centre. This allows RTÉ to run its cooling system at night, and discharge it during the day. This leads to efficiencies due to night rate electricity and cooler operating temperatures. Thereby applying sustainable practice to on going resource management.
- Ongoing **replacement of cooling systems** with modern efficient equivalents utilizing free cooling where possible. Minimising resource use.

The Central Apparatus Room in the TV centre for example is now cooled most of the year round by **fresh air**.

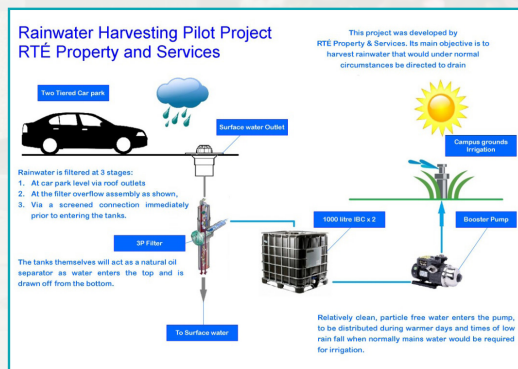
- Increased **monitoring** of energy usage points through electrical and gas metering.
- Ongoing **replacement of lighting** with more efficient type utilizing motion sensors and lighting controls where possible. Reducing unnecessary resource use.
- Inter **departmental liaison** to ensure energy efficient alternatives are sought for equipment replacements. Furthermore that running costs are kept low by matching system performance with requirements (correct temperatures for I.T. equipment, matching studio hours with air conditioning equipment schedules etc.).



**Figure 15: Main meter data before and after PRV Installation**



# Water



Achievements:

- A programme to monitor all on site usage of water per building enables us to monitor and target reductions.
- **Ongoing monitoring of water consumption.**
- RTÉ have pressure reduction measures on their water supply system. **Ongoing reduction of unnecessary resource use.**
- One of RTÉ’s largest users of water is the New Television Programmes Building Chilled Water system, and the works mentioned above in the energy reduction section actually contribute to a reduction in water consumption also.
- Rainwater Harvesting for irrigation on Donnybrook site



Water is held pending use in the tanks shown below.

The multi-storey external car park is used as a catchment area. This is currently in operational use and providing irrigation water for RTÉ’s Donnybrook site.

Details of this are shown below and this source has provided approximately 41,000 litres of water since its original installation in July 2016. Our target is to build on this successful project by implementing a similar solution to our “Stage 7” Building.



PRV Installation

## Transport

- RTÉ has a bike-to-work scheme and operates a tax saver scheme.
- RTÉ operates Go Car – a Go Car is available on the RTÉ site for travel which is unavoidable.
- Environmental performance is factored into tender processes – eg our Catering Contractor sources locally produced food and thereby reduces the carbon footprint of their service.
- As fleet is replaced – we are replacing it with energy efficient vehicles.
- Charging point for electric vehicles on the Donnybrook grounds.

## Biodiversity

Achievements:

- RTÉ has liaised with Leave no Trace Ireland in a mutually supportive role.

Subsequent to this we have reduced lawn mowing, bird houses are in place and we have identified native plant species for landscaping.

- Engagement with Trinity College in the facilitation of a project undertaken on the RTÉ grounds relating to the study of the effect of herbicides and fertilisers on the health of bees. RTÉ is a participant in the all Ireland Pollinator Plan.

## Pollution Control

- In general pollution control is managed through compliance and training. However our ongoing waste prevention policy and other measures taken through our environmental plan promote best practice in this area.
- Partnership with specialist contractor RILTA

## Procurement

- As part of the development of a Cleaner Greener ethos, the procurement process is addressed within RTÉ's Environmental Policy and action plan. RTÉ includes sustainability criteria in it's tender documents.

## Climate Change

In line with RTÉ's commitments – climate change risks are being managed as part of our sustainability plan.

### Waste Management Statistics 2019

	Feb	March	April	May	June	July
Recycled (Tonnes)	32.503	33.223	27.246	25.57	26.261	23.39
Recovered (Tonnes)	11.502	11.584	5.381	8.065	7.248	4.61
Recycling (Percentage)	74%	74%	84%	76%	78%	84%

RTÉ aspires to leading the way in the context of our environmental performance and to achieve recognition through the Pakman Business Recycling Champion Award would be a great honour and help to promote our efforts of sustainability throughout RTÉ and the wider community.

### AutoCharge: EV Pedestal

The future of EV charging

Charging Solution: IEC 62196 (Type 2) 3 Phase Mode 3 charging socket(s) c/w hatchlock

The AutoCharge: EV Pedestal SuperFast is a robust, heavy duty, hard wearing, EV charging pedestal specifically designed and manufactured for both commercial and public facing environments.

This versatile future-proof SuperFast pedestal is available in free-to-charge format and upgradeable to accommodate a number of pay-to-charge (PAYC) systems in the future. It is surface or roof mountable and includes IEC 62196 Type 2, mode 3 SuperFast charging sockets, c/w hatchlock facility, built-in overload & fault current protection.

The AutoCharge: EV Pedestal is available either as a 1way or 2way charging version in SuperFast format. Each pedestal features built-in LED status indicators and is manufactured to fully comply with IEC 61581-1 specifications.

**AutoCharge: EV Pedestal SuperFast Features**

- 16amp, 3 phase (11kW) and 32amp, 3 phase (22kW) charging options
- Future-proofed - can initially be installed as a free-to-charge pedestal and upgraded at a later date, if required, to accommodate a variety of pay-to-charge (PAYC) solutions including coin/token/RFID/bank/credit card
- Compliant with all EVs and PHEVs
- Back office/OCPP capability
- Can be customised to suit corporate branding
- IP54 British Standard Institute (BSI) certified
- Easy to install and maintain
- CE certified

Click here to visit our website  
[www.rolacserv.com](http://www.rolacserv.com) to view:

Europe's largest range of EV charging solutions – Join the EVolution

- Europe's largest range of charging points, leads and accessories
- A huge product gallery
- Company and industry news, helpful hints, advice and general information